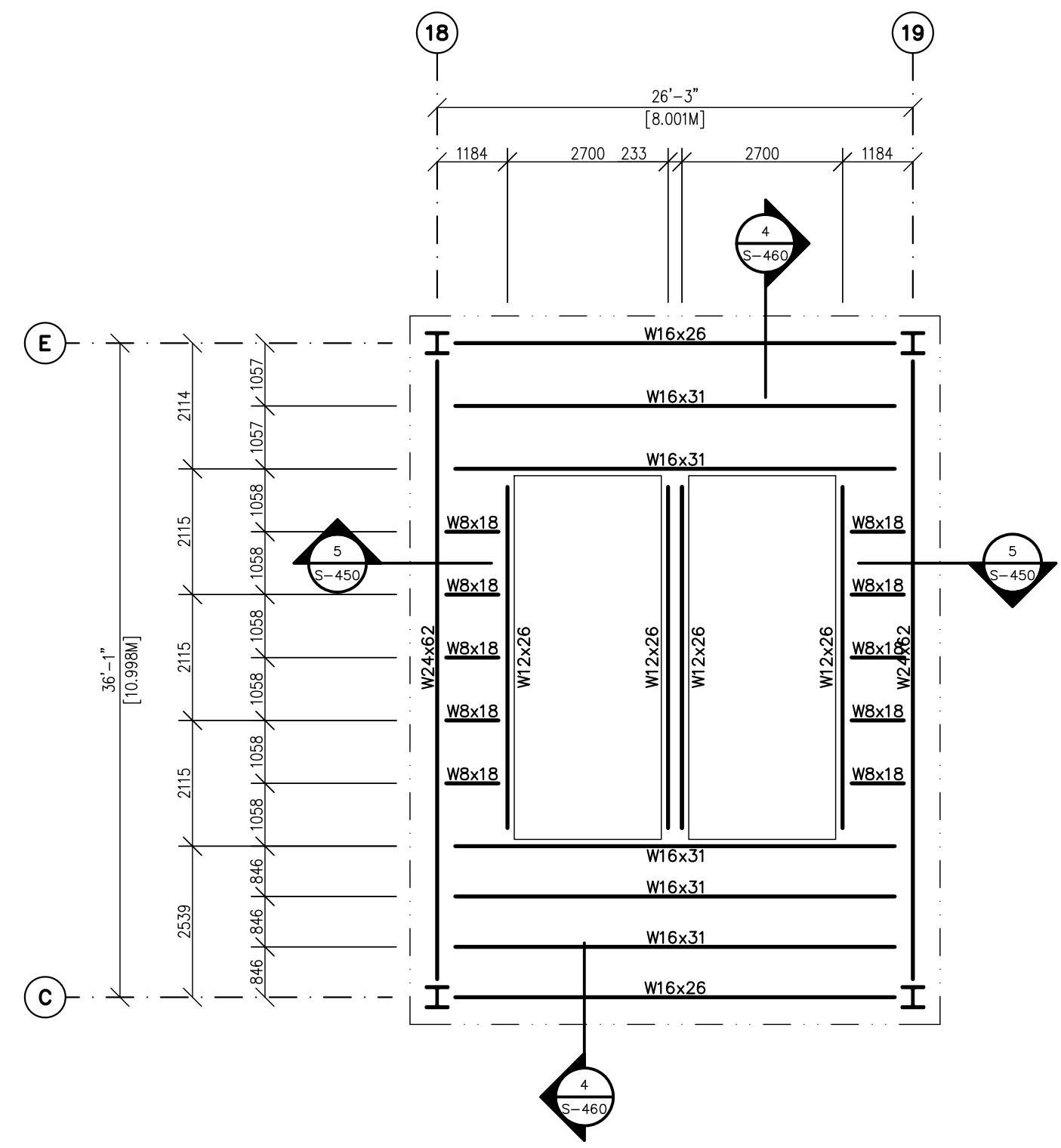


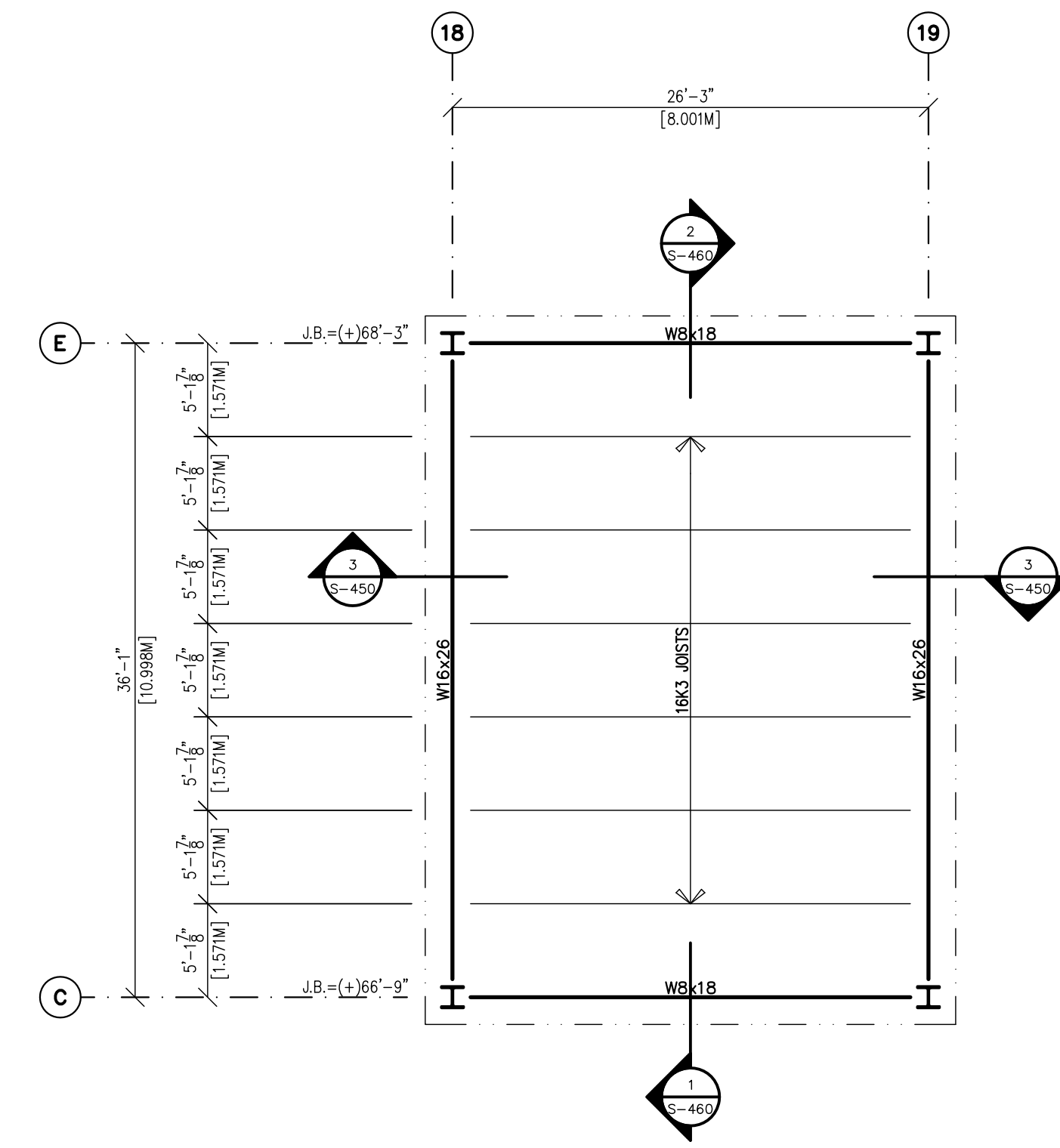
FLUFF TOWER FRAMING PLAN 24'-7 1/4" [7.500M] LEVEL

- 1) TOP OF STEEL = (+)24'-6 7/8"
- 2) 1/4" CHECKERED PLATE
- 3) FFE = (+)24'-7 1/4"
- 4) MACHINE PLATES INDICATED ON THE DRAWINGS SHALL BE INSTALLED
- 5) REFER TO OWNER AND EQUIPMENT VENDOR DRAWINGS FOR MACHINE PLATE SIZE, LOCATION AND LOADS



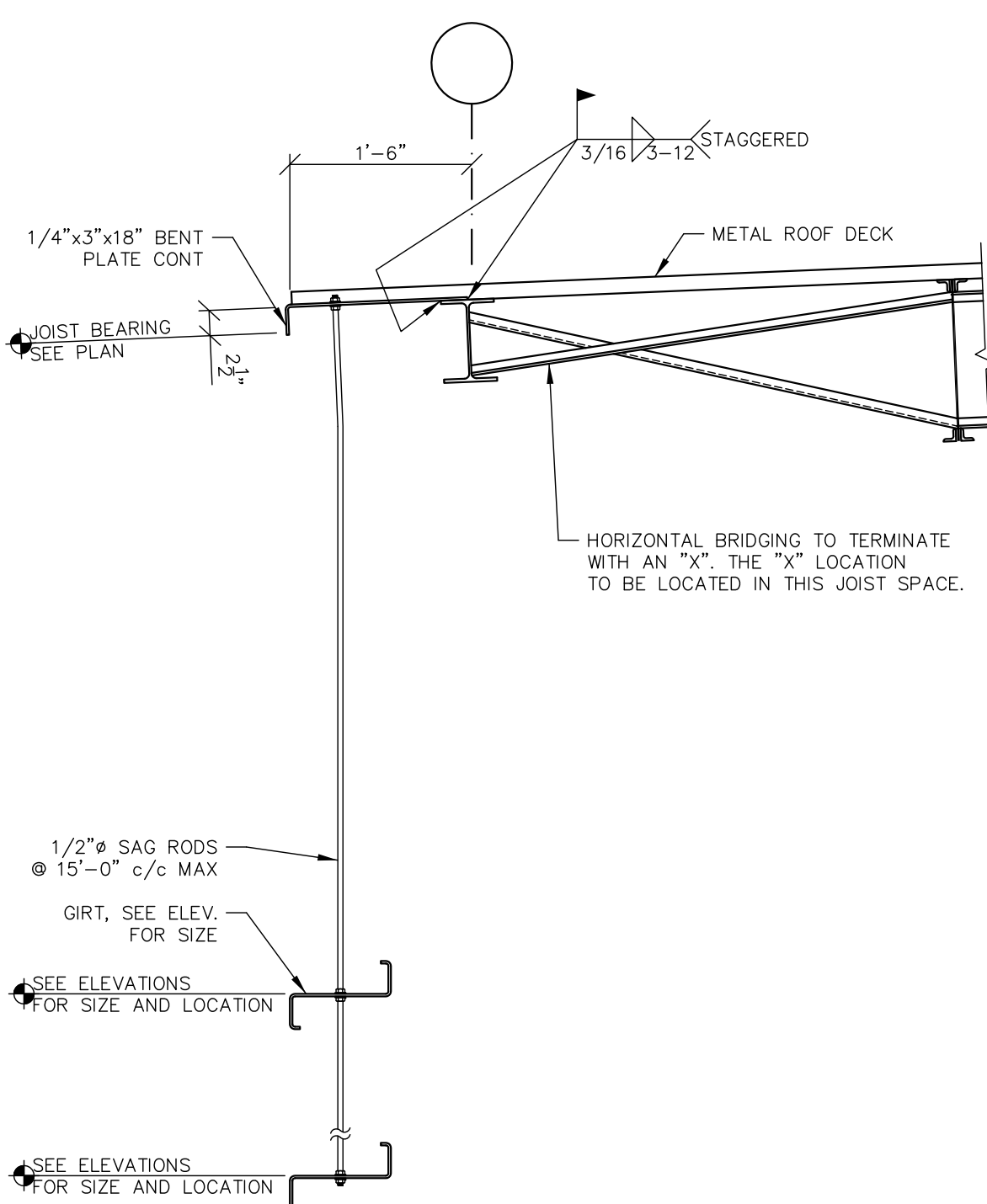
FLUFF TOWER FRAMING PLAN 46'-7 1/16" [14.200M] LEVEL

- 1) TOP OF STEEL = (+)46'-6 11/16"
- 2) 1/4" CHECKERED PLATE
- 3) FFE = (+)46'-7 1/16"
- 4) MACHINE PLATES INDICATED ON THE DRAWINGS SHALL BE INSTALLED
- 5) REFER TO OWNER AND EQUIPMENT VENDOR DRAWINGS FOR MACHINE PLATE SIZE, LOCATION AND LOADS

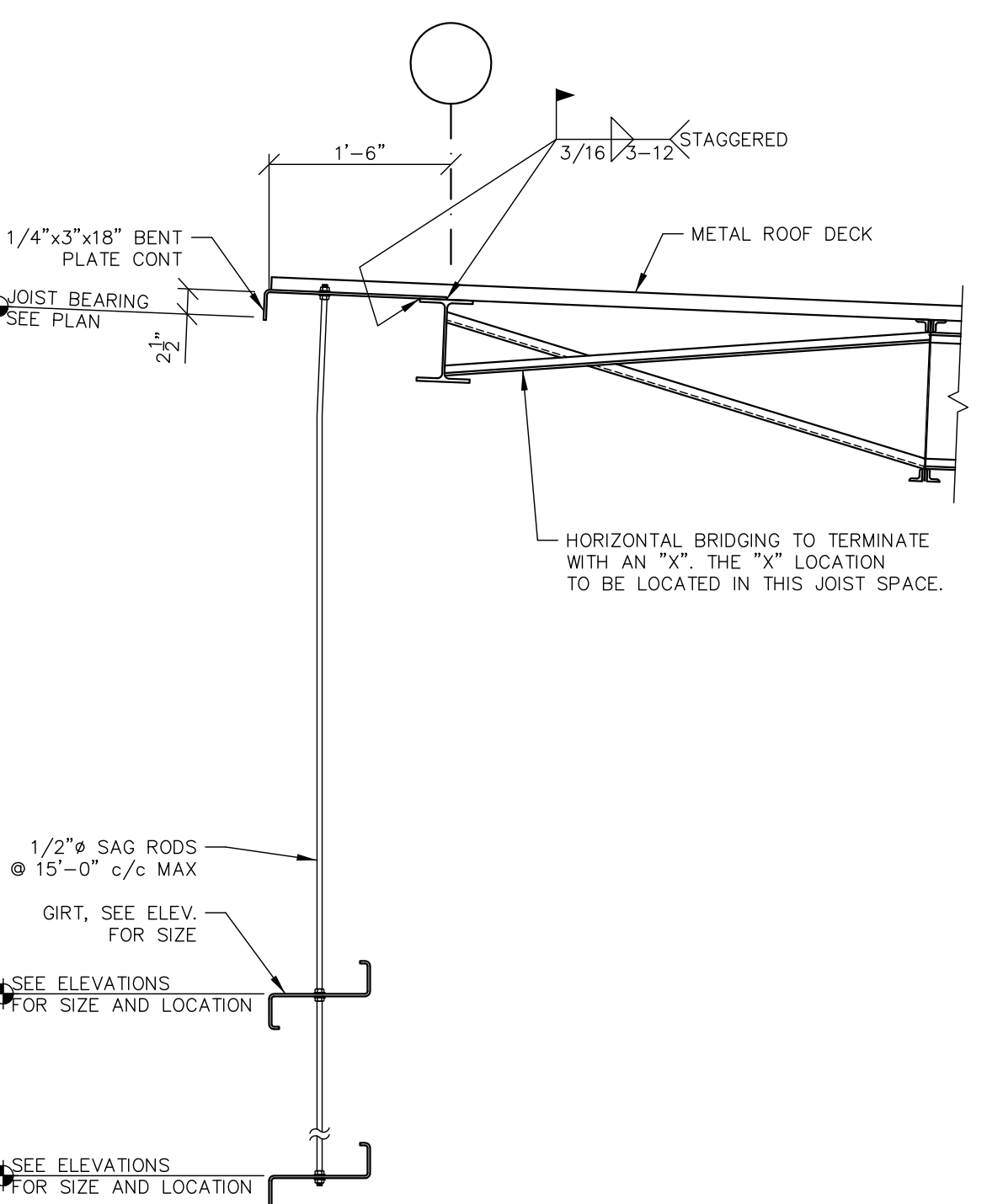


FLUFF TOWER ROOF FRAMING PLAN

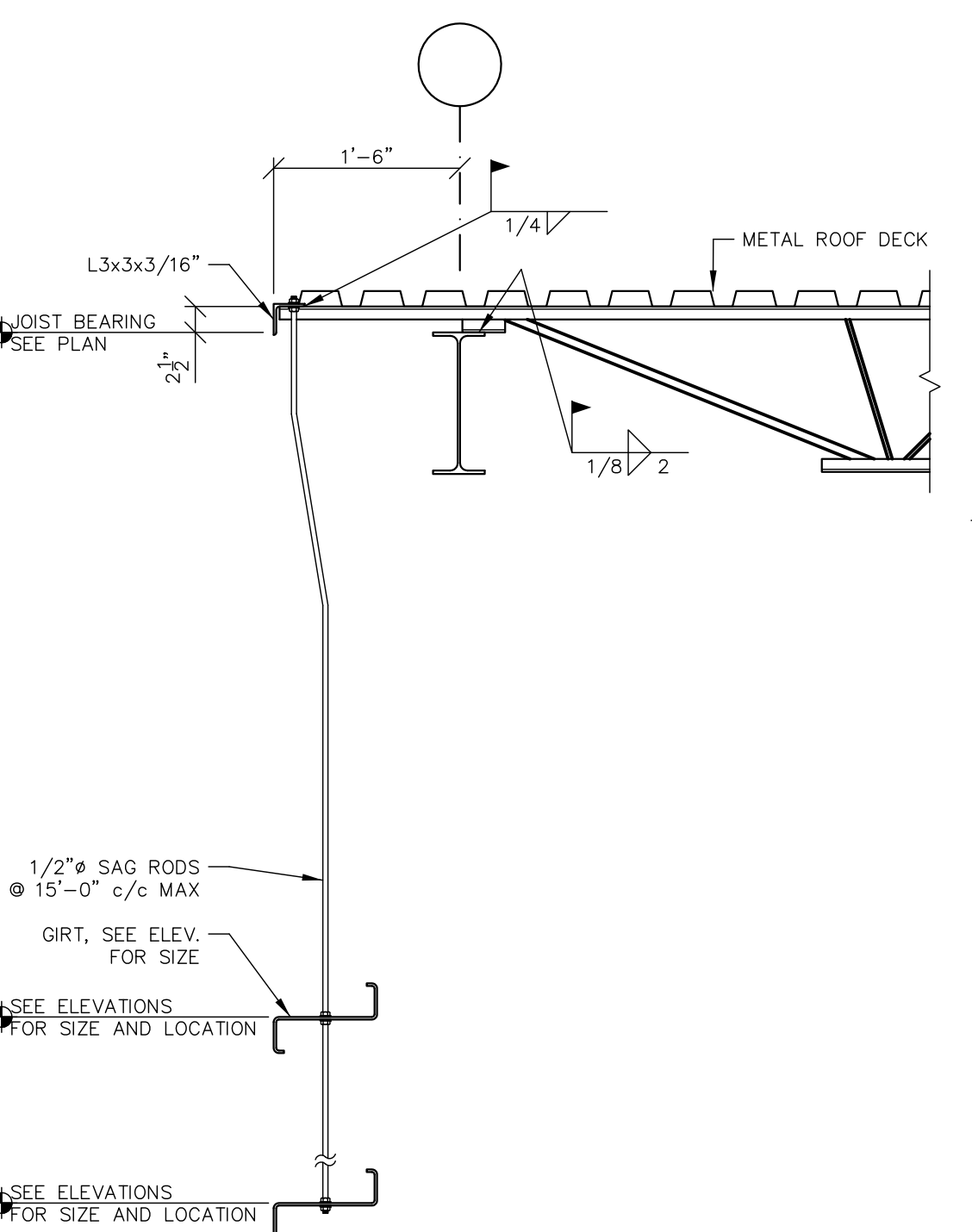
- 1) J.B. DENOTES JOIST BEARING ELEVATION
- 2) FURNISH 2 1/2" DEEP JOIST SEATS, U.N.O.
- 3) FURNISH 1 1/2" WR22 STEEL ROOF DECK (Fy MIN. = 80 KSI) U.N.O., PAINTED
- 4) MACHINE PLATES INDICATED ON THE DRAWINGS SHALL BE INSTALLED
- 5) REFER TO OWNER AND EQUIPMENT VENDOR DRAWINGS FOR MACHINE PLATE SIZE, LOCATION AND LOADS



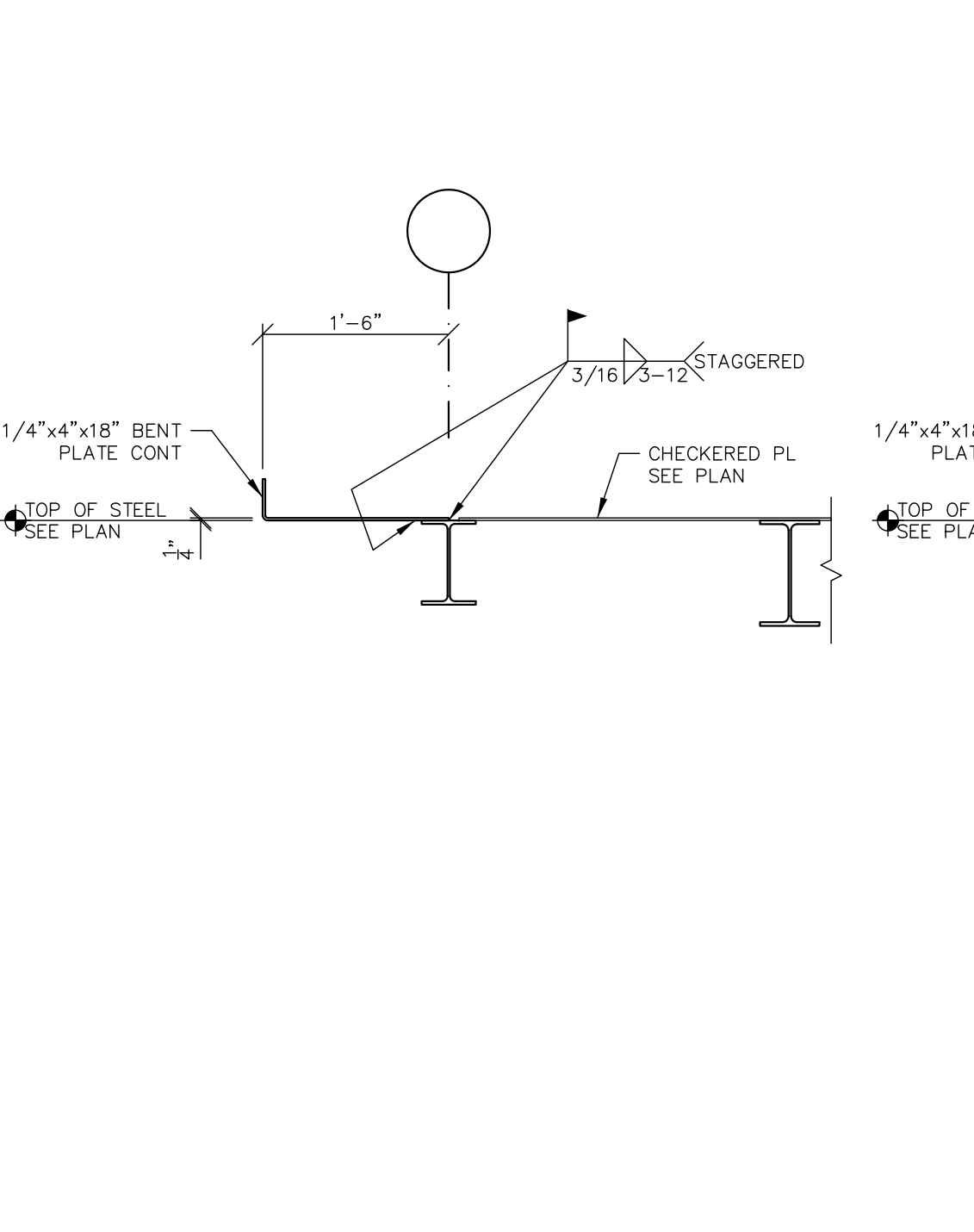
1 SECTION
S-460



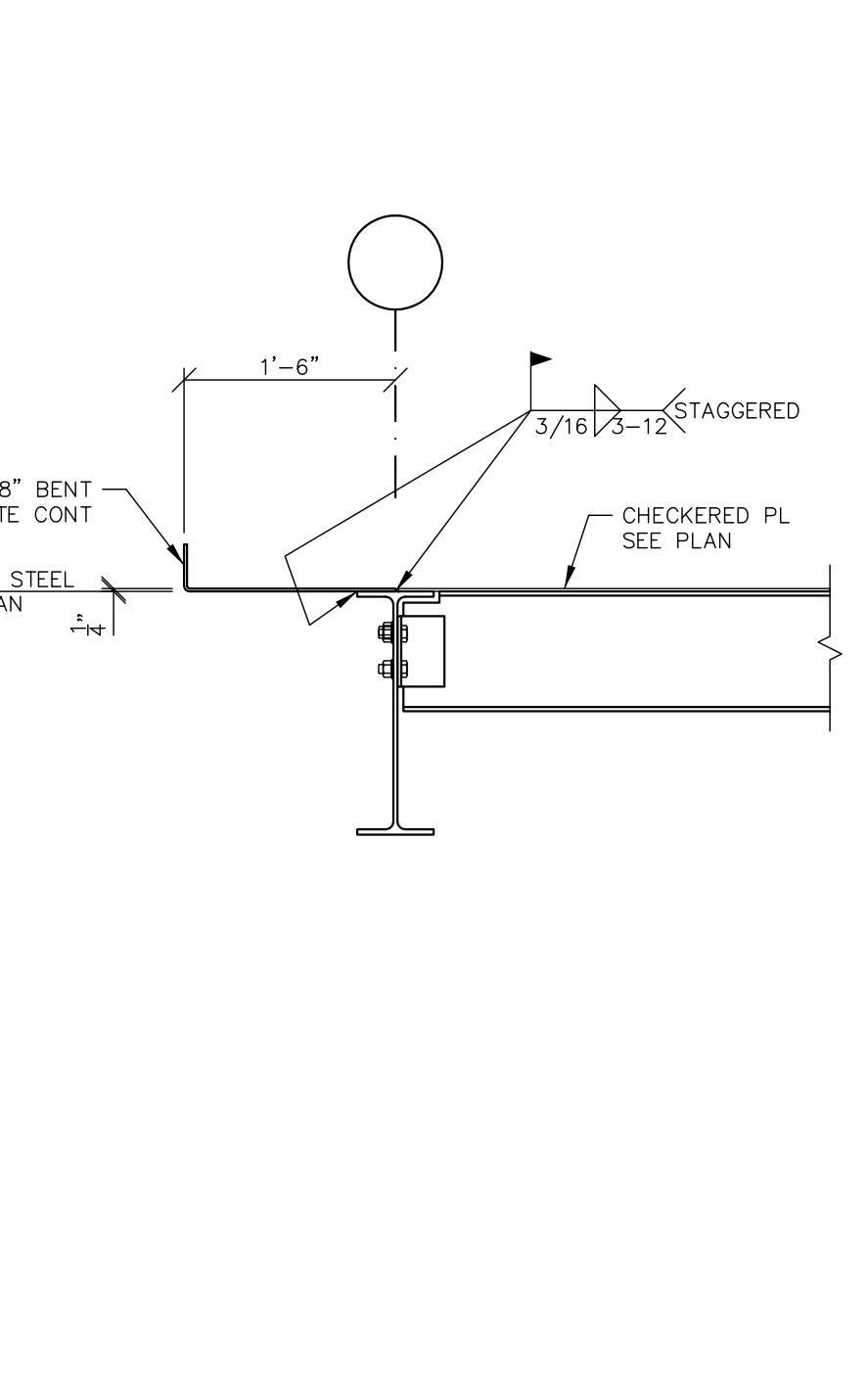
2 SECTION
S-460



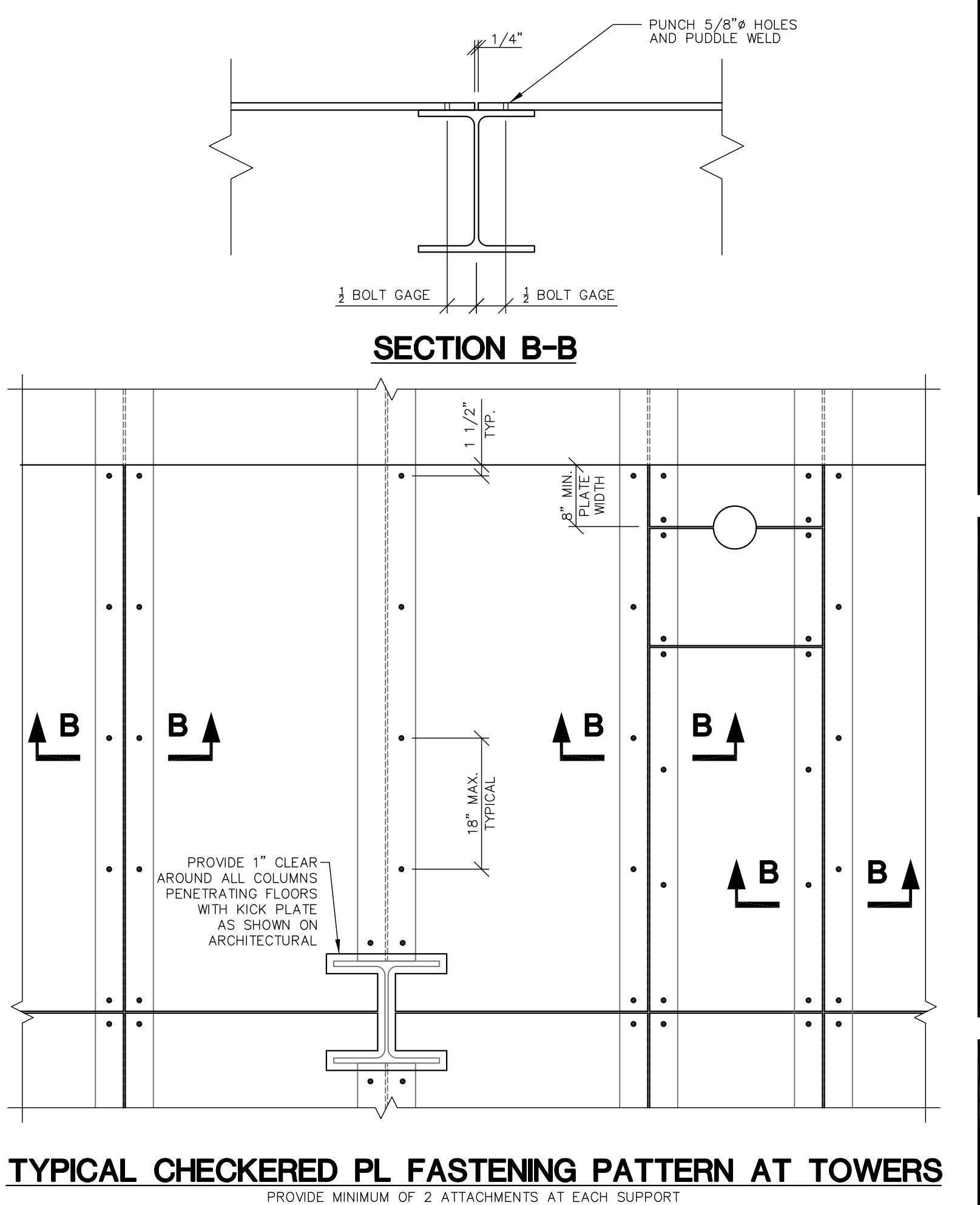
3 SECTION
S-460



4 SECTION
S-460

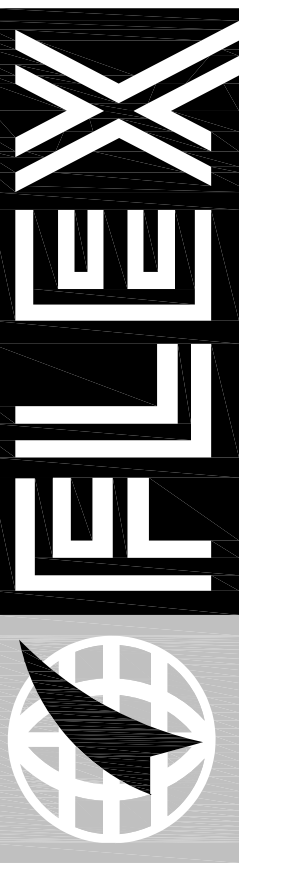


5 SECTION
S-460



TYPICAL CHECKERED PL FASTENING PATTERN AT TOWERS

ENLARGED FRAMING PLANS



FLEX FILMS (USA) INC.
1221 NORTH BLACK BRANCH ROAD
ELIZABETHTOWN, KENTUCKY 42702
PROJECT L-12 BOPET U.S.A.

DATE	REVISION	NUMBER
11-15-11	TWO	

PROJECT NO. 0529-02	DESIGNED BY EPH	CHECKED BY GPT/EFH	DRAWN BY GPT/EFH
DATE: JULY 2011	REVIEWED BY	SCALE: AS NOTED	

nse Engineers
Architects
Planners
OF KENTUCKY, INC.
624 Wellington Way
Lexington, KY 40503
Phone: (606) 223-5694
Fax: (606) 223-5697
www.nseinc.com

DRAWING NO.
UFL-L12
S-460